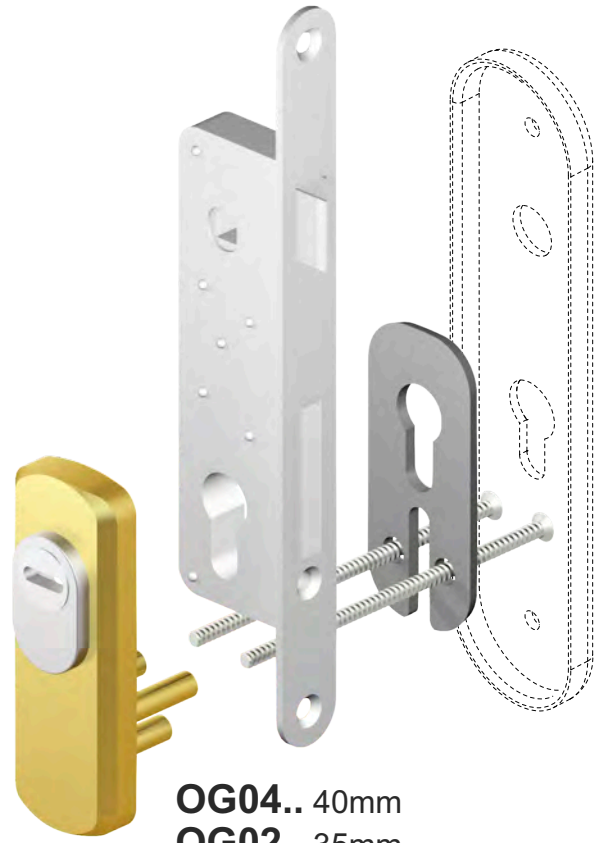
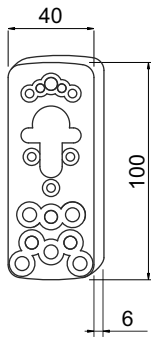
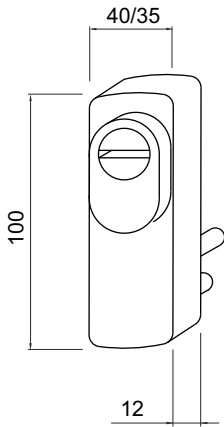




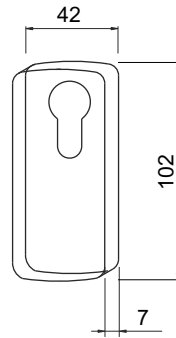
**OG03.. 40mm**  
**OG01.. 35mm**



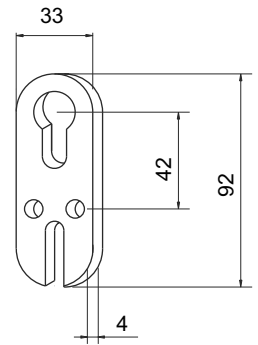
**OG04.. 40mm**  
**OG02.. 35mm**



A2572



A2573



A0071

**KT092**

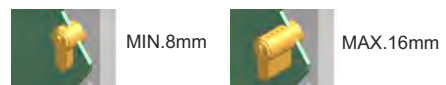
**COLORI DISPONIBILI / COLOURS AVAILABLE**

- Cromo lucido / Bright Chrome (C)
- Cromo satinato / Satin Chrome (T)
- Bronzo / Bronze (B)
- PVD Ottone / PVD Brass (2)


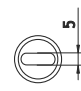

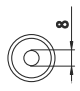
**IMBALLO / PACKAGING**



**SPORGENZE PROTETTE / PROTRUSIONS COVERED**



**ROTORI DISPONIBILI / ROTORS AVAILABLE**

- |   |  |  |   |
|---|--|--|---|
| S1<br><br>Standard | D1<br><br>x Dom | C1<br><br>x Cisa<br>TSP | C1<br><br>Chiavi<br>a croce<br>Cruciform<br>keys |
|---|--|--|---|