

20
21

**DISECTRONIC
COLLECTION**





MOTORCLICK

MTCLICK

POWER

from 7 to 36V DC/AC

RELAY CONTACT

NC/COM/NA 250V 200 Watt MAX

AUXILIARY OUTPUT

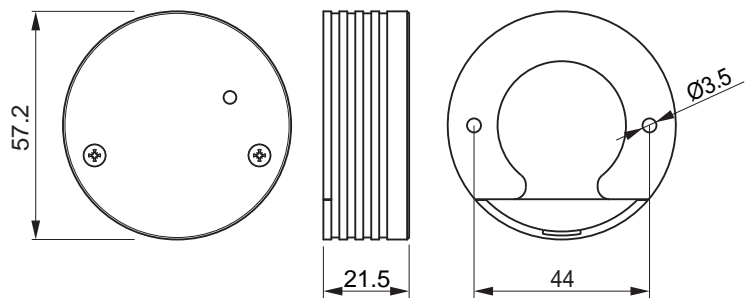
6V 1.5 A

MODE

Bistable o monostable

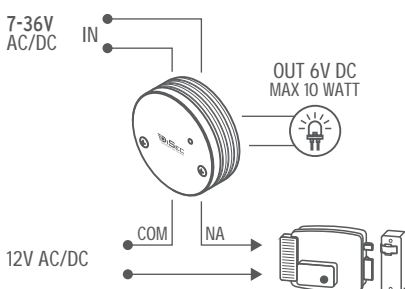
DRIVE TIME

Programmable



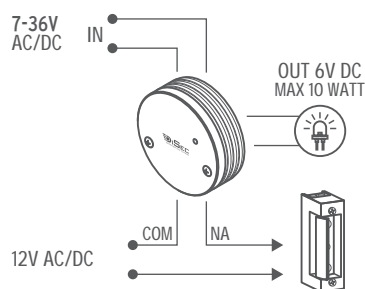
ELECTRIC LOCK

CISA TYPE (CHANGE OVER CONTACT)

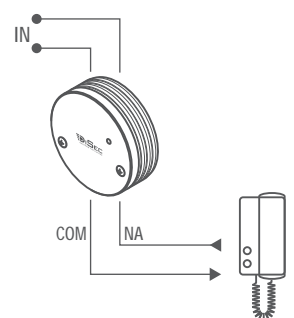


ELECTRIC STRIKE

CHANGE OVER CONTACT



OPENING VIA INTERCOM



HOW IT IS MADE

Motorclick has a polycarbonate container, installable on the wall or inside of a weather resistant electric box. It opens Gates, electric strikes or any other device equipped with electric control. Motorclick is part of the Disec Cloud platform.

WHAT IT IS

It is a smart relay; a smart switch that can be controlled with smarphone, keypad or keyfob.

HOW TO USE IT



SMARTPHONE

With the "Motorlock" APP, available for both Android or iOS devices, you can control all your Motorclicks and all the other electronic keys installed (Keypad and Keyfob). With the operating APP "Motorkey" it is possible to open and close the Motoclicks.



WIRELESS KEYPAD

IP64 weather resistant keypad, made in stainless steel and polycarbonate. The keypad is battery powered and equipped with backlight and ambient brightness sensor. Inserting a pre-authorized code (according to the access rights and timing) it allows you to open and close your Motoclicks.



WIRELESS KEYFOB

Battery powered radio electronic key, with built-in button. Once your key is entered in the "access authorization chart", by pressing the button you can lock and unlock your Motoclicks.



BRIDGE

With the "Bridge" you will unlock the door to a friend a technician or a guest even if you are away from home, plus, you will receive on time notices of all the device events, in your smartphone. You will handle all your check in(s) and check out(s) in your Bed&Breakfast, without going on site, you will generate temporary keypad codes or smart keys that will last only for the agreed time.



INTEGRATIONS

You can integrate your Motorclicks with IFTTT to add countless different smart home applications. It is also possible to use DISECTRONIC API functions to integrate Motorclicks with heterogeneous interfaces.

IFTTT API

B&B

KEYBOX

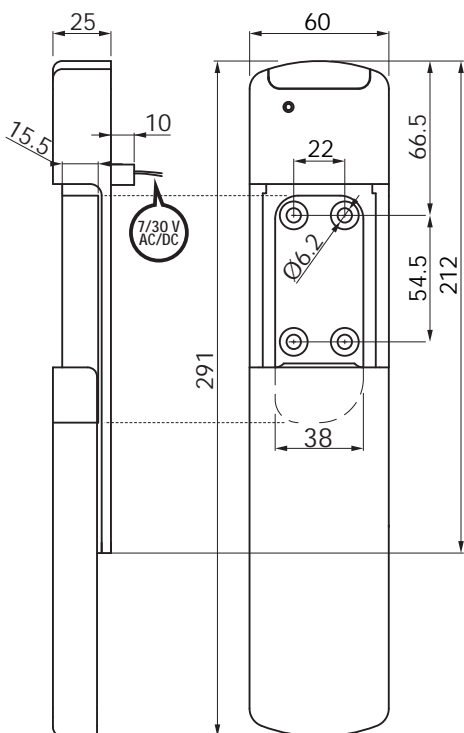
KEYBOXB&B

POWER

from 7 to 36 V DC/AC

DRIVE TIME

Programmable



WHAT IT IS

It is a strong/durable box that can contain a key or a bunch of keys; it can be controlled via smartphone, keypad e keyfob.

HOW IT IS MADE

Keybox is weather resistant box (with **IP67 protection**), built-in metal and polycarbonate. Keybox can be easily installed on the wall, inside or outside the dwellings. Keybox is part of the Disec Cloud platform.

HOW TO USE IT



SMARTPHONE

With the "Motorlock" APP, available for both Android or iOS devices, you can control all your Keyboxes and all the other electronic keys installed (Keypad and Keyfob). With the operating APP "Motorkey" it is possible to open the Keyboxes.



WIRELESS KEYPAD

IP64 weather resistant keypad, made in stainless steel and polycarbonate. The keypad is battery powered and equipped with backlight and ambient brightness sensor. Inserting a pre-authorized code (according to the access rights and timing) it allows you to open your Keyboxes.



WIRELESS KEYFOB

Battery powered radio electronic key, with built-in button. Once your key is entered in the "access authorization chart", by pressing the button you can unlock your Keyboxes.



BRIDGE

With the "Bridge" you will unlock the door to a friend a technician or a guest even if you are away from home, plus, you will receive on time notices of all the device events, in your smartphone. You will handle all your check in(s) and check out(s) in your Bed&Breakfast, without going on site, you will generate temporary keypad codes or smart keys that will last only for the agreed time.



INTEGRATIONS

You can integrate your Keyboxes with IFTTT to add countless different smart home applications. It is also possible to use DISECTRONIC API functions to integrate Keyboxes with heterogeneous interfaces.

IFTTT API

OPENING DEVICES

DAC

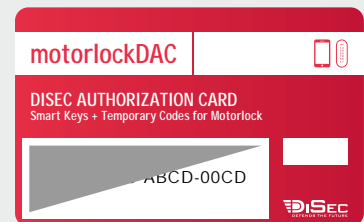
SMART KEY + TEMPORARY CODES PERMISSION

The Disec Authorisation Card (DAC) is an authorisation permit, thank to whom the administrator will be able to create and manage Smart Keys and Temporary Codes of a Disec Tronic device (Motorlock, Motorclick or Keybox). With DAC, (respectively MOTORLOCK DAC, CLICKDAC and BOXDAC) you will generate **COUNTLESS** Smart Keys to share with family members, guests and collaborators, that will then open doors and gates with the "MotorKey" dedicated APP. Each Smart Key can be customized (setting dates and time limits), activated or deactivated, modified or revoked at any time. With DAC, you can also generate and share **COUNTLESS** Numerical Temporary Codes with a limited lifespan. By typing the Temporary codes on a Disec Keypad, it will be possible to open, doors and gates, without having to use GSM systems or internet data connections. The temporary codes only last for a set "time period", decided by the administrator. With DAC, you will authorise access to your property even from a distance.

SIZE

86 mm X 54 mm

KTCL0



KTCL02



KTCL03



BRIDGE | KTBRG

Bridge is a Bluetooth and WIFI device thanks to whom it will be possible to connect to internet all the products present in the platform Disec Cloud: with Bridge you can control and pilot them, remotely. By adding the Bridge to whatever Disec Tronic product you want, you will switch it on and off from a distance as if it was a few meters away, getting, in real time all the login information.

SIZE

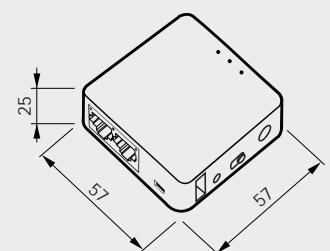
57,2 mm X 57,2 mm X 25 mm

POWER

5V, USB cable

CONNECTIVITY

Wifi 300 Mbs (2.4 Ghz)
802.11b/g/n
Bluetooth 5.0



OPENING DEVICES

KEYPAD | KTMTLTA

Keypad is a wireless numeric keypad that allows, by typing a numerical code of 6 figures, the opening and closing of all Disectronic devices. The codes (access permits) created by the administrator with the "Motorlock" APP, have specific period of validity set in a weekly calendar based on a time slots system of 24 Hours. If you have a Bed&Breakfast or a receptive structure, the pairing of Motorlock + Keypad will save you money, time and kilometers because through the Disec Cloud and a regular internet browser you will generate and send to your visitors the necessary Temporary Operative Codes.

SIZE

58 mm X 138 mm X 29 mm

POWER

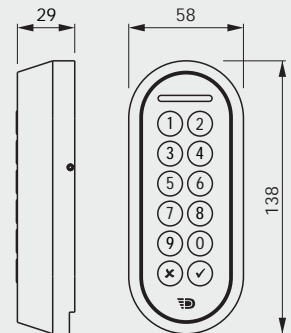
CR17345 battery

CONNECTIVITY

Bluetooth 5.0

LIGHTING

Backlit keys
Environmental sensor



KEYFOB | MTLKFB

Keyfob is a radio remote control with a compact design. It has a central button, which allows you to switch on and off all Disec Tronic devices. Using the "Motorlock" APP, the radio remote controls are registered in the access control diagram, they can be given a discretionary period of validity based on a weekly calendar and 24-hour time slots. Keyfob is a Bluetooth radio device battery powered; it mounts a CR2032 battery; it contains a low battery sensor and can comfortably be added to a normal key ring with the rest of the keys.

SIZE

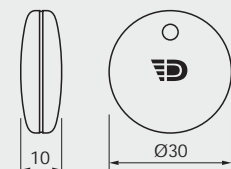
Ø30 mm X 10 mm

POWER

CR2032 battery

CONNECTIVITY

Bluetooth 5.0



DISEC S.R.L.
Prodotti Sicurezza

Via Enrico De Nicola, 2
31058 Susegana (TV)
+39.0438.453040
www.disec.it
disec@disec.it

