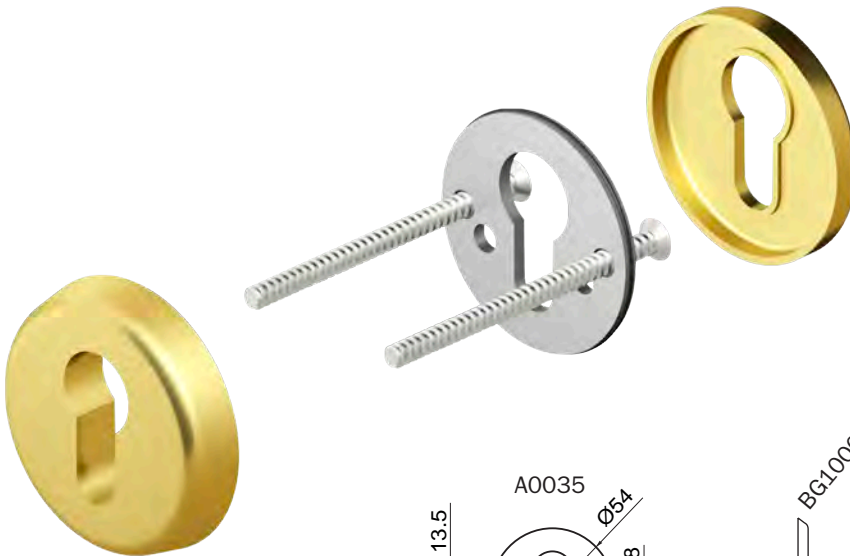
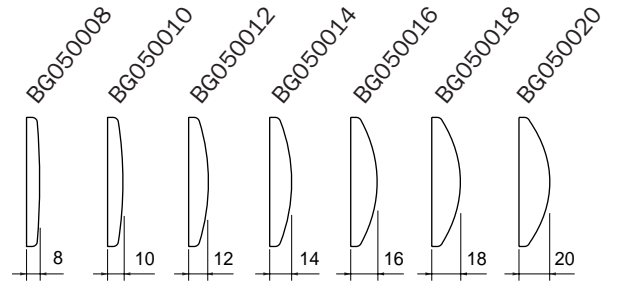
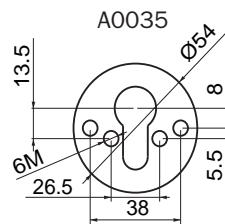
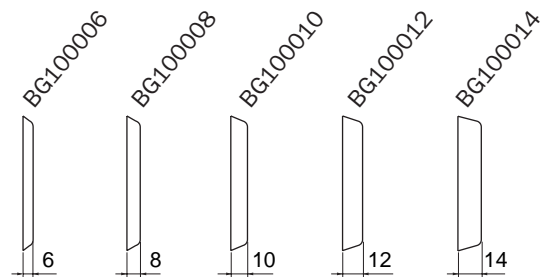
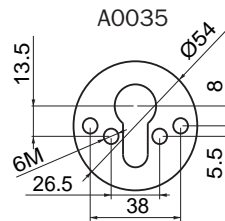




BG0500..
ACC. / STEEL
OTTONE / BRASS



BG1000..
ACC. / STEEL
ALLU. / ALUM
INOX



Colori e finiture disponibili / Colors and finishes available

- | | | |
|---|---|--------------------------|
| C Cromo lucido / Bright Chrome | 6 Argento anodizzato / Anodized silver | B Bronzo / Bronze |
| T Cromo satinato / Satin Chrome | 2 PVD Ottone / PVD Brass | N Nero / Black |
| W Bianco RAL9010 / White RAL9010 | M Marron RAL8019 / Brown RAL8019 | |

Imballo / Packaging

